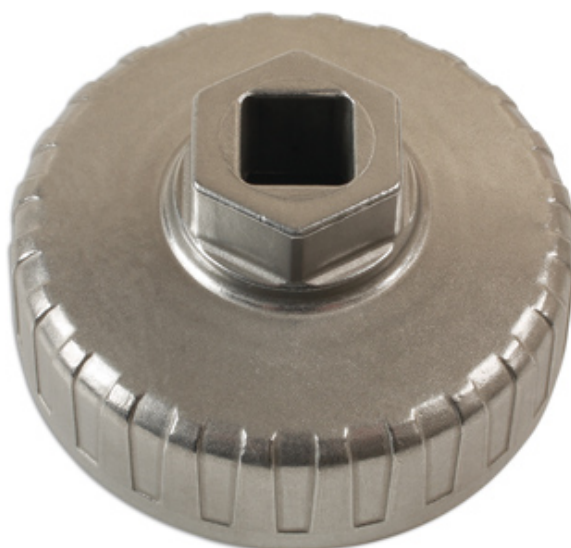


## Oil Filter Wrench 1/2"D - 84mm x 15 Flutes

A cup style oil filter wrench with applications across Hyundai and Kia 2.0L and 2.2L common rail diesel engines which removes filters without damage to the filter housing.



### Additional Information

- Applications include: Hyundai i30, Sante Fe, Sonata and Tucson; KIA Carens, Cee'd, Magnetis and Sportage.
- Suitable for OEM filter 26310-27420.
- Size: 84mm x 15 flutes x 1/2"D.
- Equipped with a 1/2"D square and 27mm hex allowing use of an appropriate spanner or ratchet depending on access requirements.
- Manufactured from lightweight aluminium which reduces the chance of damage to the housing.

<http://lasertools.co.uk/product/7259>

